



condanos

DIGITAL TOOL SOLUTIONS

SUPPLY CHAIN MANAGEMENT LIFECYCLE MANAGEMENT CONDITION MONITORING

for injection molding, die casting, punching & forming tools



CONDAMOS is the standardized, modular system for cloud-based monitoring, analysis and optimization of tools within the entire value chain.



The tool lifecycle information captured by CONDAMOS is used to provide transparent visualization and analysis. Needs-oriented maintenance of tools can be realized, and thus the production processes and the tools can be improved.

Digital Tool Management

- **Supply Chain Management**

Cross-company, worldwide management of tools and tool information within the entire supply chain.

- **Lifecycle Management**

Comprehensive and location-independent documentation and visualization of the tool lifecycle.

- **Condition Monitoring**

Recording and monitoring of the tool status, condition and location.

Our process knowledge, supported by the data basis, allows us to provide support in the analysis of problems and weak points of each tool. Based on this, we can develop and implement targeted measures to improve availability, process reliability and productivity of tools.

Tool Condition Monitoring

docking station



EAGLE

EAGLE – THE SMART TOOL MONITORING BOX

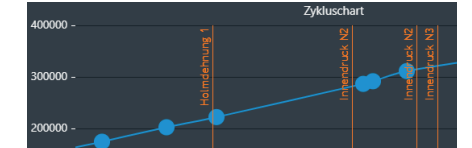
Tool condition monitoring allows the comprehensive monitoring of the location, status, and condition of injection molding, die casting, punching or forming tools. For this purpose, a docking station is permanently attached to the tool connected to the tool-specific sensors. The **EAGLE** can then be temporarily or permanently mounted on the tool's docking station. It recognizes and automatically detects the corresponding tool and records and monitors the tool parameters during the production process. Thanks to the modular design, the **EAGLE** can be individually adapted to the corresponding tool and can also be used for several tools. All recorded data are clearly visualized in an individual tool dashboard. Automatic notifications on the tool status and condition enable the needs-oriented maintenance of the corresponding tool.

Automatic identification and display of the tool status and condition

Tool status and condition



Cycle count and sensor events



The current cycle time and count, as well as deviations during production, are recorded

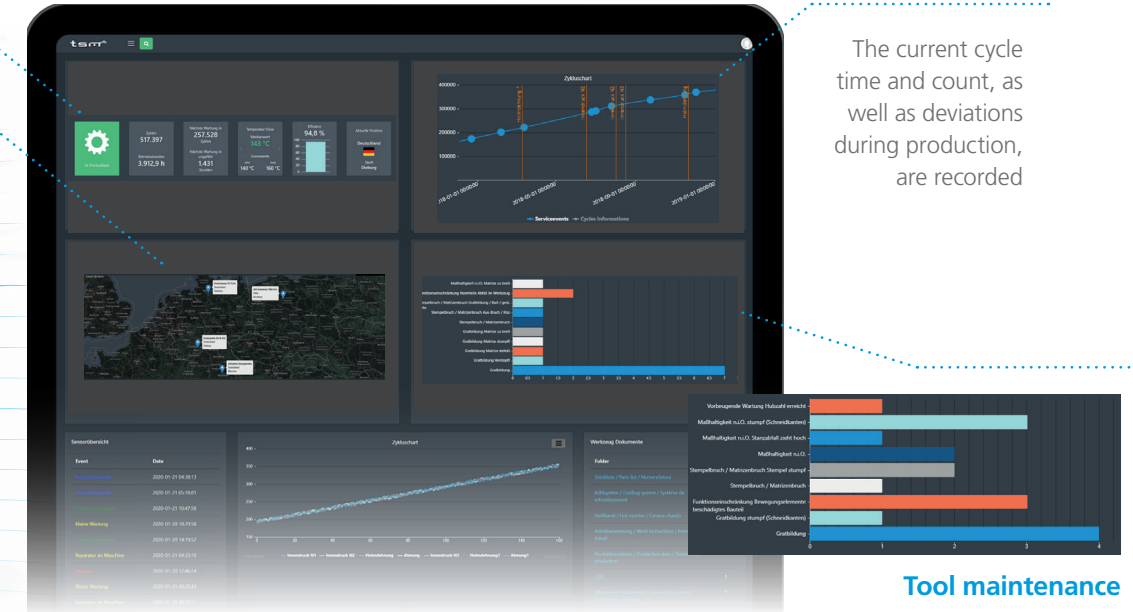
Geotracking

Seamless tracking of the tool current location and the transport stages



TOOL LIFECYCLE MANAGEMENT

Tool lifecycle management digitalizes the entire tool lifecycle! All orders concerning the tool can be processed and documented in detail with this module. All tool related information is automatically processed and visualized in a detailed service dashboard.



Tool maintenance

The prepared service history includes detailed error patterns

TOOL SUPPLY CHAIN MANAGEMENT

Tools are managed across company boundaries through the tool supply chain management module. All relevant tool information, including documents and drawings, plans or tool parameters, can be shared between partners thanks to the multi-client capability.

Locations

Dieburg



Tools up to 16 t

Dieburg



Precision tools

Frankenberg



Hardware and software

Marburg



Tools up to 60 t

Contact

Sauer & Sohn GmbH & Co. KG

CONDAMOS

Groß-Zimmerner Strasse 51

D-64807 Dieburg · Germany

phone: +49 6071 206 140

email: condamos@sauerundsohn.de

Further information:

www.condamos.de

www.formenttechnik.solutions